

Kim Chuan Depot

CCL C821

The fall-arrest system was designed to restraint workers from falling off the roof of the train during maintenance.



A total of approximately 2000 metres of lifelines were installed in the world's largest underground depot.

Workers working at the Inspection bay, cleaning bay and maintenance tracks were well protected from falling from height by our Travsafe Horizontal Lifeline system.

Training sessions were conducted by authorized installer.





The Travsafe lifelines were used to prevent the workers from falling from height while inspecting and maintaining the overhead gantry crane's rails.

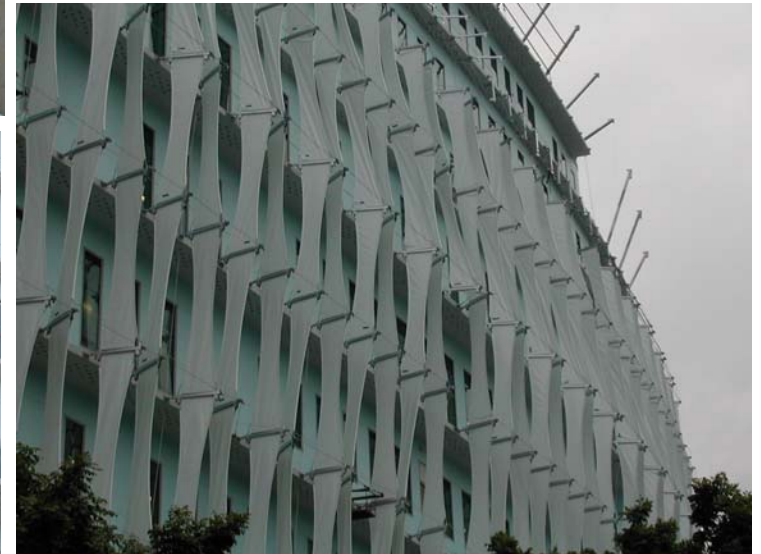
A total length of 10,000 metres were installed. It is the world's longest continuous lifeline at 1500 metres.

Port of Singapore Authority

Pasir Panjang Terminal



Infineon @ Kallang Way



The Travsafe lifelines permits the regular maintenance of the canvas façade in a safe environment. A total of 2500 metres of Travsafe were installed at all levels of the façade.



Fullerton hotel



Installed above the skylight of the main lobby, it arrest the fall of the user just in case a glass canopy give way.

A high-end condominium in Frankie Avenue. The unique design of the roof finishing does not permits safe access for gondola riggers.

The Travsafe lifelines were installed to provide a safe access for the workers when rigging a gondola for façade maintenance.



The Trumps Condominium



Changi Airport Terminal 3 Green Wall



The Travsafe used to prevent the workers from falling during maintenance of the landscape. More than 1000 metres installed.



The Travsafe is used to restraint workers from working near the edge of the roof.



Only authorized installer are permitted to assemble the Travsafe.



Kerry Ingredient Factory @ Johor Baru



A Total of 20000 metres of Travsafe lifelines were installed at 2 Depots in Taiwan, Yan Chao & Tsoying Depots.

The lifelines were to prevent the workers from falling off the roof of the Depot's buildings.

**A project
with
BlueScope
Taiwan**



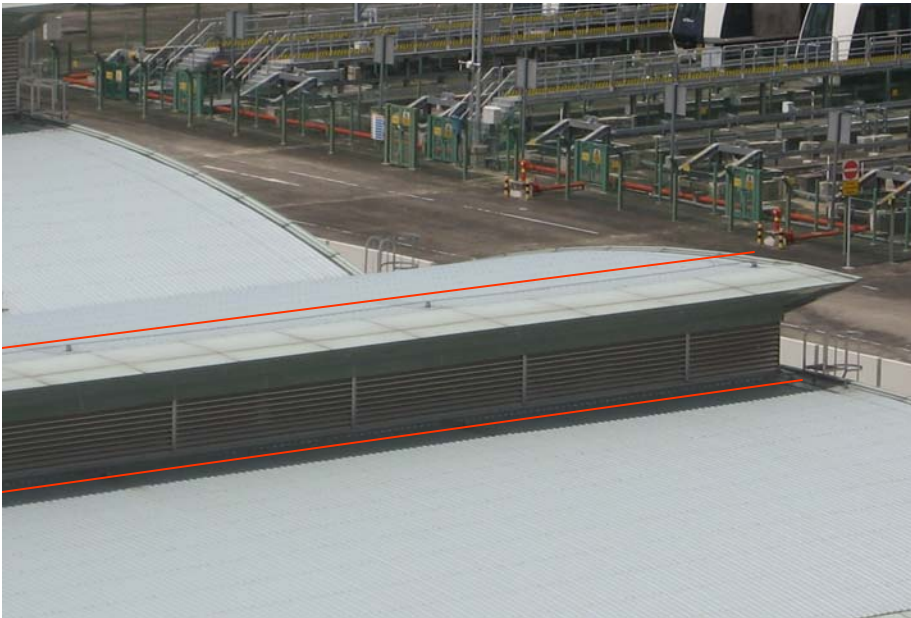
Taiwan High Speed Rail Depot

NEL C701 SENGKANG DEPOT



Safe access were constructed for the user to reach the lifelines.

A 2 kilometers lifelines covering the entire edge of the roof perimeters. It is designed to prevent the user from falling off the edge of the roof.





Supporting bracket



Many forms of water tightness available by roof contractors.

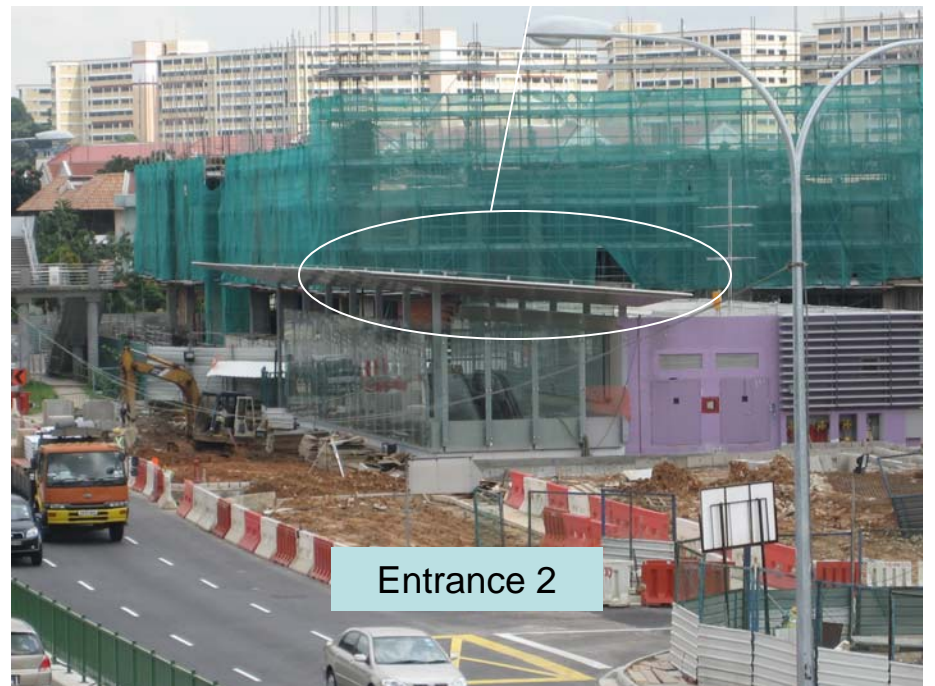
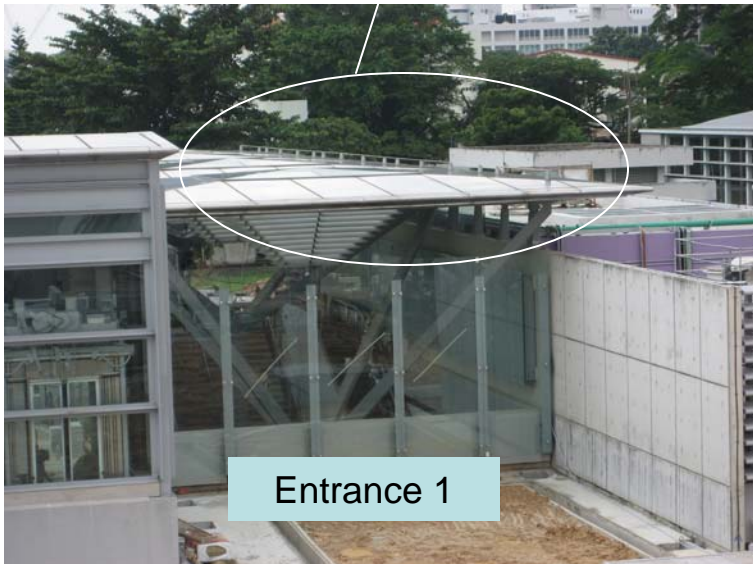
The Travsafe is used to restraint workers working near the edge of the roof. It also acts as a fall-arrest system in the event of a fall.

***MRT CCL
Nicol Station
C828***



CCL C851A

Bartley Stations





Travsafe Lifeline



Fixed Anchor Point



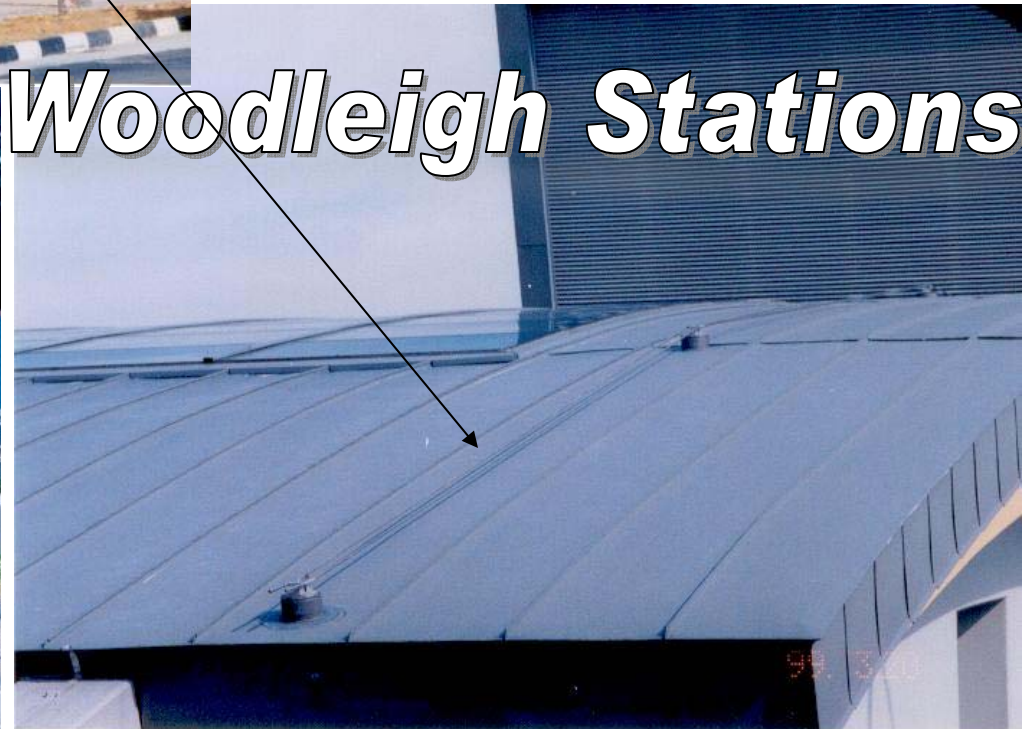
***MRT NEL
CLARKE QUAY
STATION***

The Travsafe was designed to prevent falls from the edge of an inclined roof.



NEL C704

Woodleigh Stations



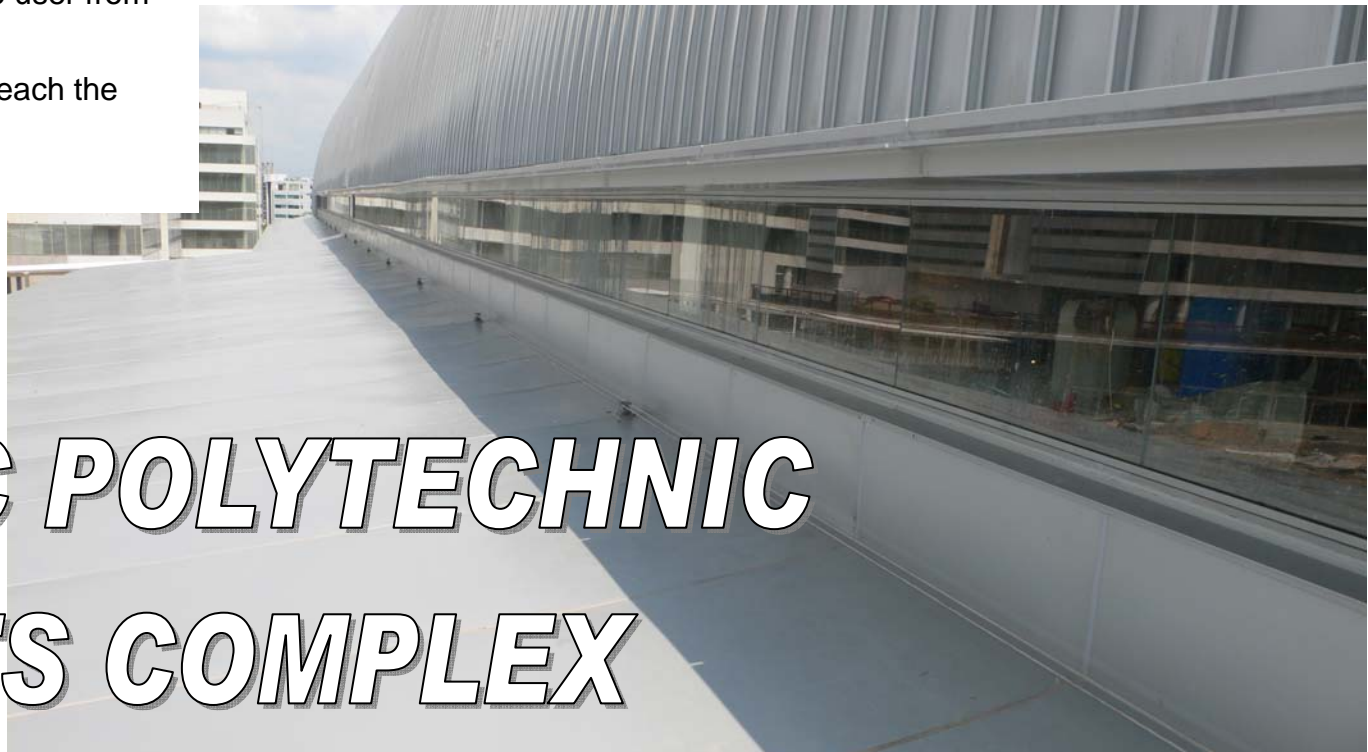


The Travsafe lifeline was installed for the safety of the cleaners maintaining the glass façade of the sports complex.

It is a restraining system to restrict the user from working from the edge of the roof.

With a 2M lanyard the user can only reach the glass façade.

Main Contract: China Construction.



REPUBLIC POLYTECHNIC SPORTS COMPLEX